



Homed:In

18 Station Road, Southwater, RH13 9HQ



Roman Lane

, Southwater, RH13 9AG

Price Guide £400,000




Roman Lane



 Homed:In




 Homed:In

Description

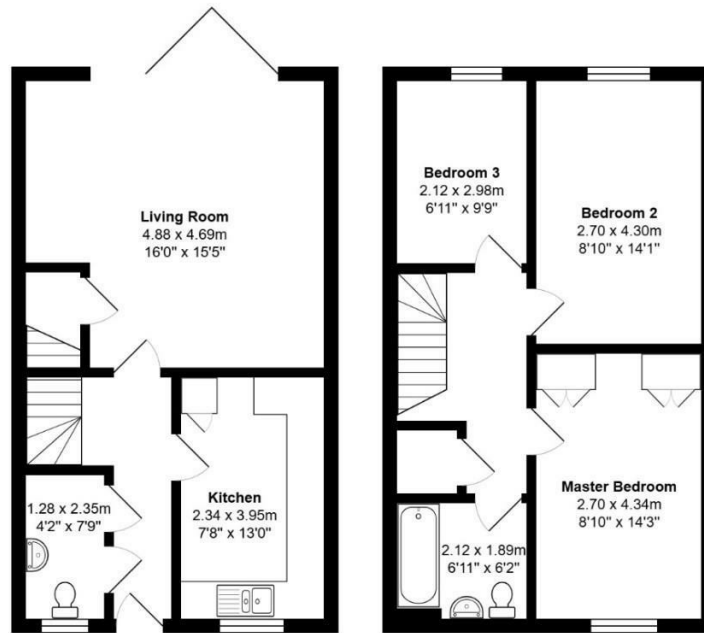
- Exceptional 3 Bedroom Home
- 3 Good Sized Bedrooms
- Immaculate Throughout
- Bright Modern Kitchen with Ample Storage/Surface
- Bi-fold Doors Added to Living Room
- Excellent Location Close to Country Park
- Large WC and Storage
- VIDEO TOUR AVAILABLE



 Homed:In



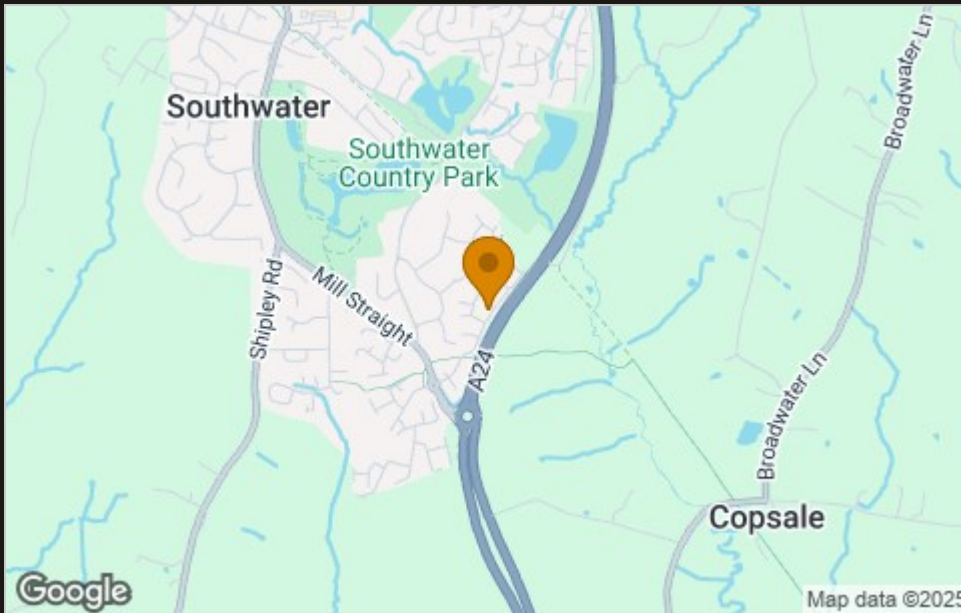
Floor Plan



Total Area: 86.8 m² ... 934 ft²

All measurements are approximate and for display purposes only.
Copyright 2024. All rights reserved.

Area Map



Viewing

Please contact our Horsham Office on 01403 597595 if you wish to arrange a viewing appointment for this property or require further information.

These particulars, whilst believed to be accurate are set out as a general outline only for guidance and do not constitute any part of an offer or contract. Intending purchasers should not rely on them as statements of representation of fact, but must satisfy themselves by inspection or otherwise as to their accuracy. No person in this firm's employment has the authority to make or give any representation or warranty in respect of the property.

To **GET A FREE VALUATION** Call us on: **01403 597595**
or email us at: info@homedin.co.uk

Energy Efficiency Graph

